



2022

ANNUAL REPORT



CONTENTS

1

A Message from KMEA's President and General Manager

2

Who we are and what we do

4

KMEA Highlights

8

KMEA Projects and Resources

12

KMEA Financials

13

KMEA Member Cities Summary

14

KMEA Board of Directors

17

A Message from KMG's President and General Manager

18

KMG Highlights

19

KMG Board of Directors

20

KMG Member Cities Summary

21

KMG Financials

22

Natural Gas Market Review

24

KMEA/KMG Executive Committees, Joint Board for
Administration, and Business Associates

25

KMEA Staff

MISSION

KMEA provides solutions for reliable and cost effective energy for its members.

VISION

KMEA is committed to adding value and helping our members navigate the rapidly evolving and complex energy industry. Our agency will be engaged and responsive to our members' needs with innovative solutions. KMEA will be at the forefront of emerging technology and industry developments that could impact our members and their customers.

KMEA is a member driven agency where every employee's goal is to provide each member with the information, solutions, and services they need. We will maintain a member-centric approach; one of continuous improvement, so that we remain the energy solution provider of choice.

A MESSAGE FROM KMEA'S PRESIDENT AND GENERAL MANAGER

JON QUINDAY AND PAUL MAHLBERG



On the heels of 2021 and the Winter Storm Uri event, KMEA stormed into 2022 enthusiastically but with a sense of caution. This past year was fraught with challenges – high natural gas prices, supply chain constraints, workforce availability issues, and a host of other influences. But, through this past year, we adhered to our mission – providing solutions for reliable and cost-effective energy for our members – to meet these challenges head on.

A few of these solutions over this past year included:

- KMEA's second line crew was initiated. Osage City and Pomona went together and put their trust in KMEA to provide line maintenance services for both communities. A three-person crew now manages the cities' electric systems and assist several neighboring member communities with maintenance items. Our initial line crew continues to expand their services in the City of Dighton and neighboring cities in western Kansas.
- Several "victories" were achieved this past year with transmission service rate dockets at the Federal Energy Regulatory Commission bringing significant savings to our members. This is directly attributable to our regulatory team (General Counsel and Regulatory & Rates Manager positions) that has been recently formed with the approval of the membership.
- In its second full year, our Mid-States group continues to provide much needed substation, power plant and electric line services. Expectations are that this group will continue to grow with the needs of our members.
- On the power supply front, we developed an "on-the-behalf-of financing" model for newly constructed CAT generation projects for our member communities. Several cities have initiated this process with expectations of many more members taking advantage of this program in the future.
- Our transmission congestion hedging activities had a banner year, brining in a record amount of revenue, helping to offset higher electric costs for members.
- The KMEA Public Power Manager Leadership program was initiated in 2022 to identify future leaders for KMEA. We are very proud of the three individuals who successfully completed the program last year.

We look forward to 2023 and ways we can further enhance the agency. We have embarked on a new strategic planning effort with focus on finding new and expanded services that will allow our members to fully realize all the benefits of community-owned public power. We would like to thank the entire membership for all the trust and support that you have provided over the last several years and the staff for all they do to make our agency the best it can be.

Thank you for allowing us to serve you over this past year!

A stylized, handwritten signature of Jon Quinday in black ink.

Jon Quinday
KMEA President

A stylized, handwritten signature of Paul Mahlberg in black ink.

Paul Mahlberg
KMEA General Manager



WHO WE ARE AND WHAT WE DO

In 1980 Kansas Municipal Energy Agency (KMEA), a nonprofit **JOINT ACTION AGENCY**, was formed under Kansas law as a quasi-municipal corporation. Made up of electric municipalities, KMEA is subject to many of the same rules as a city, such as open meetings and open records.

The agency was authorized by act to plan, finance, and construct projects for the purchase, sale, generation, and transmission of electricity for securing an adequate, economical and reliable supply of electricity and other energy for its members. The agency was also authorized to issue and sell revenue bonds for the purpose of providing funds to pay all or part of the cost of the acquisition, purchase and construction of such projects.

Today, eighty-six Kansas municipalities benefit from being members of KMEA. By joining KMEA, member cities come together to strengthen their effectiveness in dealing with common challenges. Through the joint action approach, cities employ the agency to undertake projects that they would find impractical if attempted independently.

SERVICES PROVIDED BY KMEA AT NO ADDITIONAL COST TO MEMBERS

Legal Support and Contract Management

- Access to KMEA's outside attorneys for special legal assistance (KCC, FERC, State of Kansas)
- Legal review of contracts
- Assistance with service territory disputes and resolution
- Assistance and/or lead in contract negotiations
- Lead in developing and reviewing contracts
- Review of supplier invoices for compliance

Regulatory/Legislative & Advocacy Support

- Monitor regulatory activities at the Kansas Corporation Commission (KCC) and Federal Energy Regulatory Commission (FERC)
- Intervene and represent members in specific dockets before the KCC and FERC
- Provide support on any potential KCC/FERC needs
- Maintain a \$500,000 Regulatory and Dispute Fund that is available to members
- Provide legislative support to KMU and members
- File and provide testimony in front of state legislative utility committees in the Senate and House on utility issues

Southwest Power Pool Representation

- Staff serve on numerous SPP committees and working groups at SPP representing the interest of Kansas municipals
- Monitor SPP activity and the impact on members (includes outside consultant assistance)
- Serve as SPP Transmission Customer on behalf of members
- Request needed transmission service for members
- Fill out necessary forms on behalf of members (supply adequacy, etc.)

Project Asset/Portfolio Management

- Provide full consultation services for member's power supply portfolio
- Identification of potential resource projects for consideration by members
- Issue request-for-proposals as needed
- Maintain diverse counterparty relationships
- Creative energy solutions (pre-delivery payment options, blend and extend, seasonal on-peak, etc.)
- Intra-agency transactions (members selling and buying from each other to optimize resources)
- Aggregate member needs to capitalize on economies-of-scale savings

Cost-of-Service/Rate Studies/Financial

- Financial review and fund balance forecast
- Revenue requirement forecasts
- Class cost-of-service analysis
- Retail rate design
- Special contract/economic development rate development
- Energy cost adjustment (ECA) calculations
- Distribution generation tariffs and other special tariffs development
- Provide annual budgets for power supply projects

Other Member Services

- Equipment loan program (infrared cameras, power loggers, pole testing equipment, etc.)
- Offer specialized training services on power supply, SPP Market, general electric utility operations, etc.
- Provide account support including education, dispute resolution, customer offerings and customer relations
- Provide NERC compliance expertise and assistance

FEE BASED SERVICES PROVIDED BY KMEA

Full Energy Management Services

- 24/7 operations desk to maintain constant communications with SPP and members
- Serve as Market Participant in the SPP Integrated Marketplace
- Offer-in generation resources and bid-in city's load
- Develop load forecasting for use in SPP market
- SPP billing and invoicing services including managing billing disputes
- Transmission service management and congestion hedging
- ARR/TCR optimization
- Provide member-specific monthly reports to members
- Provide overall SPP market analysis reports on a monthly basis

Engineering/Project Management Services

- Full engineering services through Mid-States
- Offer project management and owner's representative services for member utility projects
- Power plant maintenance and problem solving
- Metering and communication expertise and consulting (programming, testing, and troubleshooting)
- SCADA expertise and consulting
- Substation engineering, maintenance, problem solving, repair
- Construction crew for new substation and upgrades
- Distribution line maintenance services



KMEA MID-STATES MAJOR PROJECTS IN 2022



ASHLAND

Replaced 34.5 kV tie breaker at power plant



JETMORE

Replaced five reclosers at substation



COLBY

Added a transformer at the Southwest Substation



STOCKTON

Installed CAT generator



MINNEAPOLIS

Substation addition to eliminate Allis Chalmers switchgear



ST JOHN

Installed CAT generator



STERLING

Added a second transformer at substation

OSAGE CITY AND POMONA CONTRACT FOR LINEMAN SERVICES

NEW LINE CREW



FROM LEFT TO RIGHT- JASON MULLINEX, CHRIS CROUCHER, AND KRIMZYN CLARK

The cities of Osage City and Pomona signed contracts with KMEA to provide lineman services effective July 1st. The initial term of the agreement is three years.

One of the top needs identified through a 2019 survey of our membership was line maintenance services. Soon after, KMEA's first line crew was created in May 2020 in the western part of the state in Dighton.

The new crew, based in Osage City, is comprised of three linemen that will share the responsibility of completing all tasks required to operate and maintain both municipal electric systems.

"The City of Osage City is looking forward to a new era of linemen services provided by KMEA for the mutual benefit of Osage City and Pomona. In this new environment of severe shortages of certified journeymen linemen, Osage City and Pomona will be provided quality electrical distribution services by experienced journeymen linemen that each community could not afford on their own."
(Rod Willis, City Manager)

KMEA BOARD OF DIRECTORS MEETINGS



FROM LEFT TO RIGHT- KMEA PRESIDENT JON QUINDAY AND KMEA GENERAL MANAGER PAUL MAHLBERG

The KMEA Board of Directors met twice in 2022. During the April 27th meeting the board approved the addition of the cities of Lucas and Sabetha to the membership, reviewed the preliminary 2023 budget, and approved the renewal of one-year lines-of-credit for EMP1, EMP2, and EMP3.

The board met again on September 29th. They took action to approve the addition of the cities of Elwood and Wathena to the membership, reviewed and approved the 2023 budget, and elected officers, at-large executive committee members and joint board representatives. John Quinday, from the City of Russell, was re-elected KMEA president.

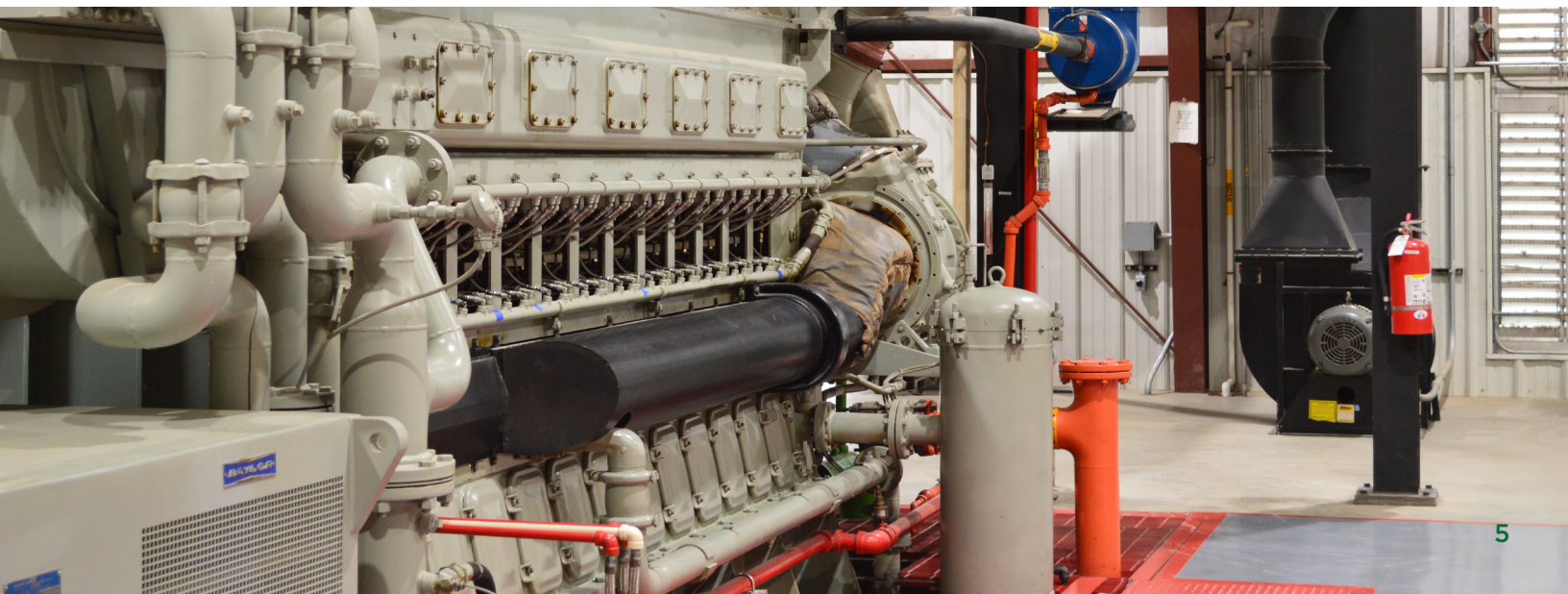
RATE STUDIES

KMEA provides a broad range of services when it comes to assisting members with electric retail rates. These services include comprehensive financial reviews, fund balance forecasts, class cost-of-service analysis, retail rate design, special contract/economic development rate design, energy cost adjustment (ECA) calculations, and other special tariffs.

In 2022, KMEA completed rate studies for several members cities, ranging from quick reviews to full cost-of-service analyses with new rate designs. Heading into 2023, numerous rate studies have been requested and are currently in progress. Additionally, KMEA is providing more support for distributed generation policies and procedures as the penetration of residential and commercial solar installations increase.

CITIES OF ELWOOD, LUCAS, SABETHA, AND WATHENA BECOME THE NEWEST KMEA MEMBERS

With the addition of these four cities in 2022 KMEA membership increased to eighty-six communities.



KMEA 2022 AWARDS



GIL HANSON OUTSTANDING SERVICE AWARD **MIKE SHOOK**

Mike Shook, Director of Electric Utilities of the City of Coffeyville, was selected by the membership to receive the 2022 Gilbert E. Hanson Outstanding Service Award. This award, named in honor of KMEA's first general manager, recognizes those who have made significant contributions to municipal joint action, their communities, the electric utility industry, and public power.

MAX EMBREE DISTINGUISHED SERVICE AWARD **JONATHAN MITCHELL**

Jonathan Mitchell, City Manager of the City of Hoisington, was selected as the 2022 Max Embree Award recipient. Max Embree was a long-time resident of the City of Colby and played a leading role in the early years of KMEA. The award honors his memory and is awarded to individuals who have demonstrated exceptional leadership and devoted service to both KMEA and public power.



DEDICATED COMMITMENT TO SERVICE AWARD **KENT POTTORF**

Kent Pottorf, Electrical Operations Manager of the City of Garden City, was selected as the 2022 Dedicated Commitment to Service Award recipient. This award was established to recognize an employee of a KMEA member city who has, over a period of years, demonstrated outstanding performance and made significant contribution to their municipal utility.

ANNUAL CONFERENCE



The 2022 KMEA Annual Conference was held September 29th and 30th at the Drury Plaza Hotel Broadview in Wichita, KS. A large number of utility personnel, administrative staff, and elected officials were in attendance, filling the venue to capacity. Day one began with the KMGa and KMEA Board of Directors meetings. The general session followed that afternoon with a presentation from entertainer **Tim Cavanagh**. The day-two keynote speaker was **Gian Paul Gonzalez**, an inspirational speaker who shared his life story and lessons learned from coaches, managers and players.

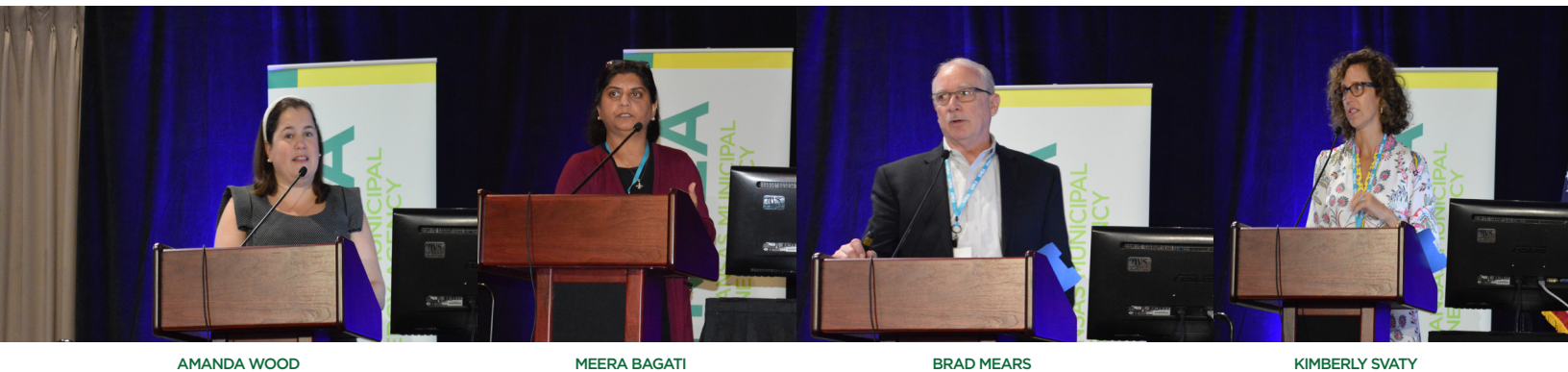


Breakout sessions were presented later in the day by individuals from the electric and gas industries. The presentations included: "KMGa Regional Meeting and KMGa Agency Overview" by Dixie Riedel and Paul Mahlberg (KMEA), "Cyber Security Best Practices" by Steve Strom (Custom Internet Services), "SPP Accreditation and Regulatory Updates" by Terri Pemberton and Tom Saitta (KMEA), "KCC Natural Gas Regulations and Overview" by Leo Haynos (KCC), "Southwest Power Pool Overview" by Bruce Rew (SPP), and "Electric Vehicle Rural Toolkit" by Tami Alexander (KDOT).



PAUL MAHLBERG DIXIE RIEDEL STEVE STROM TERRI PEMBERTON TOM SAITTA LEO HAYNOS BRUCE REW TAMI ALEXANDER

On Friday morning, "Infrastructure Bill Grant Opportunities" was the topic discussed by Amanda Wood from Becker & Poliakoff. The presentation was followed by "Energy Market Overview" from Meera Bagati (NextEra Energy Resources). Brad Mears from KMU and Kimberly Svaty from Gencur Svaty gave a legislative update.



AMANDA WOOD MEERA BAGATI BRAD MEARS KIMBERLY SVATY





KMEA PROJECTS AND RESOURCES

KMEA actively seeks power marketing arrangements that match member cities' short and long-term power supply and capacity needs with power supply alternatives. KMEA member cities benefit from a broad range of supply options and competitive supplier pricing because of the larger market presence that the joint action approach brings. KMEA has championed multiple energy and capacity sales between cities, providing them with opportunities to optimize their resources. Additionally, KMEA has enabling agreements in place with multiple suppliers allowing us to more quickly evaluate and act on proposals. KMEA, along with member cities, has developed strategies to best utilize transmission rights.

ENERGY MANAGEMENT PROJECTS

Energy Management Projects (EMPs) were created to build governance structures and establish common reliability with metering standards. EMP cities can share capacity and exchange energy at agreed upon pricing, while jointly planning future electric power supplies. EMPs utilize KMEA operations central dispatch center. Under the EMP agreements, project cities' loads are forecasted and aggregated to a single load which is then submitted to the Southwest Power Pool (SPP) for clearing in the Integrated Marketplace. Additionally, each city's resources, whether contracted or city-owned, are scheduled or offered in the SPP market. KMEA also manages transmission congestion hedges as specified by protocols developed by each EMP group.

ENERGY MANAGEMENT PROJECT NO.1

EMP1 began delivering electricity on June 1, 2006 to five cities. The City of Pomona joined in 2015 and the City of Prescott joined in 2017.

Baldwin City
Gardner
Garnett
Osawatomie
Ottawa
Pomona
Prescott

ENERGY MANAGEMENT PROJECT NO.2

EMP2 began delivering electricity on November 1, 2007, to nine cities. Additionally, Anthony, Cimarron, Garden City, Mankato, Meade, and Oberlin have joined since EMP2's inception. The City of Oberlin began to take power in January 2022.

Anthony	Meade
Ashland	Oberlin
Beloit	Osborne
Cimarron	Russell
Garden City	Sharon Springs
Hoisington	Stockton
Lincoln Center	Washington
Mankato	

ENERGY MANAGEMENT PROJECT NO.3

EMP3 began delivering electricity to its first ten participating cities in May 2013. Altamont, Arma, Blue Mound, Chetopa, Herington, Jetmore, Kiowa, La Harpe, Lindsborg, Moran, and Moundridge have since joined. The City of Herington began to take power in June of 2022.

Altamont	Kiowa
Arma	La Harpe
Blue Mound	Lindsborg
Burlingame	Moran
Chapman	Moundridge
Chetopa	Neodesha
Girard	Osage City
Herington	Seneca
Holton	Sterling
Horton	Wamego
Jetmore	

In 2022, EMP1, EMP2, and EMP3 had summer peaks of 107.5 MW, 162.8 MW, and 101.9 MW's respectively. Each city within the EMPs has an unique portfolio of energy and capacity resources, custom-built to meet their needs. Cities may have similar resources that are contracted in aggregate due to timing and economic reasons. Prior to 2021, EMP costs had been decreasing slightly due to the influx of wind generation and a stable, relatively low-priced natural gas market. Winter storm Uri is primarily responsible for the rise in EMP energy costs in 2021. The extreme cold weather caused a dramatic increase in natural gas and energy prices in 2022. Energy prices remained volatile for a multitude of reasons, including carry over effect from Uri, geopolitical issues in Europe which put pressure on the global energy markets and, lastly, extreme weather events.

HISTORICAL POWER SUPPLY COST BREAKDOWN BY EMP



Ashland	Lincoln Center
Augusta	Neodesha
Baldwin City	Osage City
Beloit	Osawatomie
Ellinwood	Osborne
Erie	Ottawa
Fredonia	Pratt
Gardner	Russell
Garnett	Sharon Springs
Girard	Sterling
Hoisington	Stockton
Holton	Wamego
Horton	Washington
Larned	Wellington
	Winfield

GRAND RIVER DAM AUTHORITY

On January 19, 2000, KMEA and the Grand River Dam Authority (GRDA) entered into a 10-year power purchase agreement (PPA) for 39 MWs. The agreement consists of baseload capacity and energy, which is delivered on long-term, firm transmission. In 2005 the agreement was extended to April 30, 2026, and the amount increased to 84 MWs in order to facilitate the addition of eight KMEA member cities.

Garden City
Gardner
Lindsborg
Ottawa
Russell

DOGWOOD PROJECT

On July 19, 2017, KMEA entered into an asset purchase agreement with Dogwood Energy LLC for the purchase of a 10.1% ownership interest (approximately 62 megawatts) in the Dogwood Energy facility on behalf of five member cities. Dogwood is a 650 MW, natural gas fired, combined-cycle facility located in Pleasant Hill, Missouri. Through this arrangement five cities were able to join forces to secure a life-of-unit, reliable and economic power supply resource for each of their communities. The project began providing energy to the five cities on March 30, 2018.

Arcadia	Garnett	Osawatomie
Arma	Glen Elder	Osborne
Ashland	Goodland	Ottawa
Baldwin City	Herington	Pomona
Belleville	Hill City	Russell
Beloit	Holton	St. Francis
Burlingame	Horton	Seneca
Cawker City	Jetmore	Sharon Springs
Centralia	Lakin	Stockton
Chapman	Lincoln Center	Troy
Cimarron	Lindsborg	Wamego
Colby	Mankato	Washington
Enterprise	Meade	
Eudora	Norton	
Garden City	Oberlin	
Gardner	Osage City	

WESTERN AREA POWER ADMINISTRATION

Under contracts with the Western Area Power Administration (WAPA), forty-four project participants are entitled to firm hydroelectric capacity totaling 32.9 MW in the summer and 28.3 MW in the winter, with associated energy of 101,105 MWh annually. WAPA energy is scheduled to enable the participating cities to avoid demand charges and replace high-cost, peak-hour energy. In 1997 the WAPA power supply agreement was extended by twenty years through 2024. In 2016 the WAPA agreement was again extended through 2054.

Anthony	Neodesha
Baldwin City	Norton
Colby	Oberlin
Garnett	Osawatomie
Herington	Ottawa
Holton	Sharon Springs
Horton	St. Francis
La Crosse	Wamego
Lindsborg	

SOUTHWESTERN POWER ADMINISTRATION

In 1983 KMEA and the Southwestern Power Administration (SPA) entered into a contract where the participant cities would take their individual entitlements to federal hydroelectric power, totaling 11.2 MW. In 2019 the project participants, KMEA, and SPA extended the contract through 2034. SPA also provides low-cost supplemental energy when favorable water conditions exist at its hydroelectric facilities.

MARSHALL WIND

KMEA entered into a 20-year power purchase agreement for 7 MW with Marshall Wind Energy LLC on February 2, 2016. The wind farm is located in Marshall County, Kansas, and has an installed capacity of 72 MW. KMEA's first renewable wind energy resource, Marshall Wind provides renewable energy to four EMP1 Cities. The facility began providing power to KMEA members on March 22, 2016. In 2022 total energy delivered to the participating cities was 30,140 MWh.

Baldwin City
Gardner
Garnett
Ottawa

BUCKEYE WIND

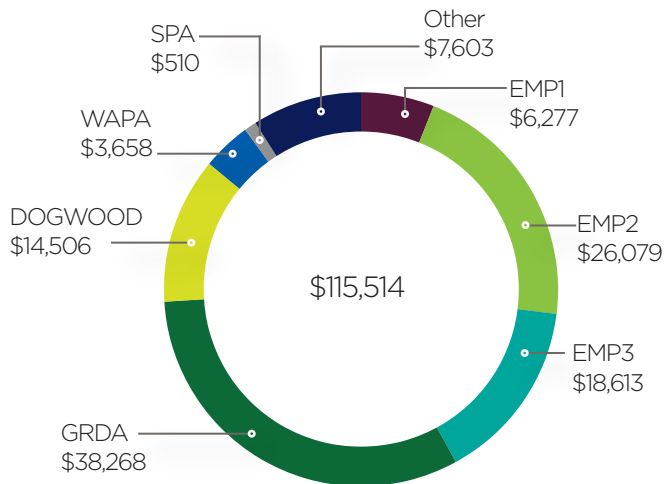
On November 22, 2017, KMEA entered into a 15-year power purchase agreement for 41.7 MW with Buckeye Wind Energy LLC. The wind farm is located in Ellis County, Kansas, and has an installed capacity of 200 MW. Twenty-three KMEA members participate in this long-term, economical energy supply ranging from a 0.2 megawatt share to a 15.0 megawatt share for one of the larger member communities. The project began providing wind power to our members on June 1, 2018.

Anthony	Mankato
Ashland	Meade
Baldwin City	Osage City
Beloit	Osborne
Cimarron	Ottawa
Colby	Pomona
Garden City	Russell
Hoisington	Sharon Springs
Holton	Stockton
Jetmore	Wamego
Lincoln Center	Washington
Lindsborg	

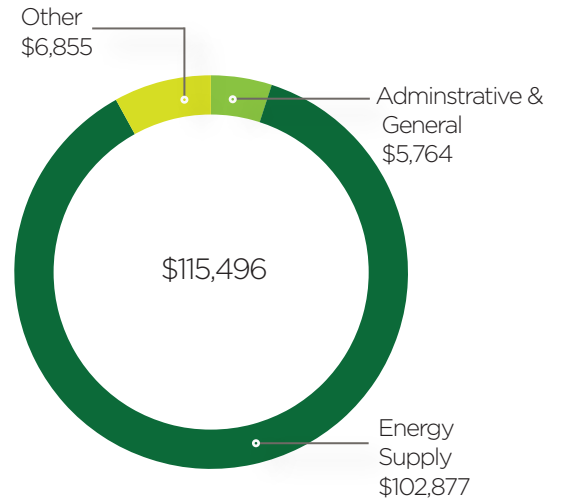


KMEA FINANCIAL HIGHLIGHTS

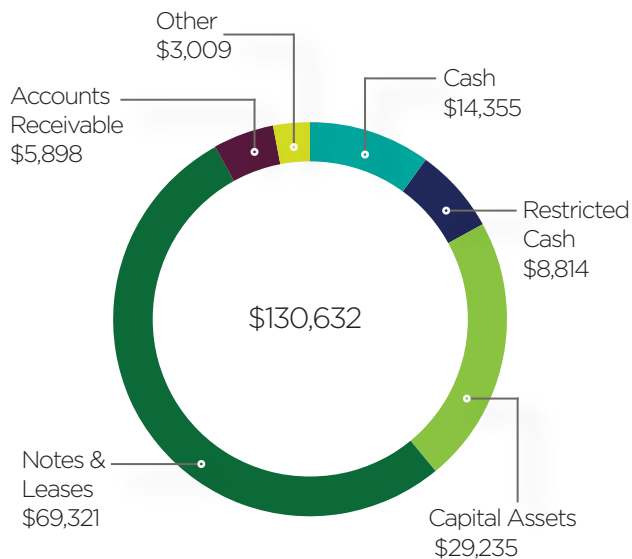
2022 REVENUES (IN THOUSANDS)



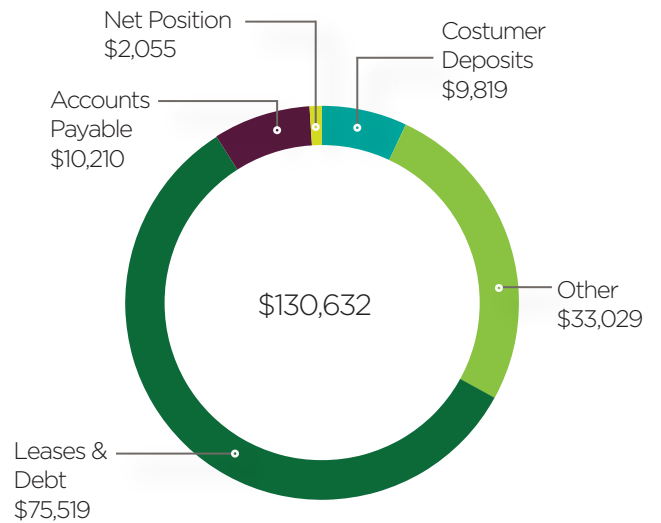
2022 EXPENSES (IN THOUSANDS)



ASSETS DECEMBER 31, 2022 (IN THOUSANDS)



LIABILITIES & NET POSITION DECEMBER 31, 2022 (IN THOUSANDS)



The completed audited financial report for 2022 can be found at www.kmea.com.

KMEA MEMBER CITIES SUMMARY

City	Population	kWhs Sold by the City	Peak kW
Alma	850	14,694,347	3,367
Altamont	1,080	7,782,257	2,500
Anthony	2,100	28,491,694	8,162
Arcadia	254	1,374,299	300
Arma	1,445	9,437,357	3,400
Ashland	779	12,737,000	4,155
Augusta	9,368	66,356,176	22,304
Baldwin City	4,752	33,936,004	9,930
Belleville	2,007	21,715,928	6,350
Beloit	3,452	48,909,960	12,918
Blue Mound	270	1,912,400	700
Bronson	304	1,713,014	300
Burlingame	971	7,754,353	2,500
Burlington	2,558	31,872,706	9,233
Cawker City	430	5,116,138	1,351
Centralia	500	3,854,000	1,136
Chanute	8,722	288,861,572	55,999
Chapman	1,367	11,146,039	3,500
Chetopa	1,050	8,283,931	2,487
Cimarron	2,000	15,173,682	5,137
Coffeyville	8,900	730,862,474	111,589
Colby	5,371	57,632,935	16,800
Dighton	1,038	8,692,985	1,900
Elwood	1,125	6,557,820	2,400
Enterprise	850	4,305,359	1,571
Erie	1,444	9,648,194	3,223
Eudora	6,561	40,149,359	12,747
Fredonia	2,145	25,570,329	8,241
Garden City	34,437	299,593,774	75,095
Gardner	23,942	152,339,000	42,100
Garnett	3,234	28,003,000	9,000
Girard	2,707	28,488,860	9,700
Glasco	459	3,189,520	1,115
Glen Elder	420	3,924,025	1,277
Goodland	4,315	44,316,703	13,000
Herington	2,109	16,632,000	5,681
Hill City	1,110	13,989,032	5,226
Hoisington	2,657	20,347,689	6,600
Holton	3,392	47,748,441	12,500
Horton	1,700	13,348,299	3,600
Hugoton	3,764	41,717,860	12,891
Iola	5,800	94,109,599	23,312
Jetmore	822	8,216,618	2,600
Johnson City	1,447	15,742,625	4,020

City	Population	kWhs Sold by the City	Peak kW
Kansas City BPU	182,000	2,543,193,361	462,000
Kiowa	1,026	10,182,563	3,557
La Crosse	1,300	11,893,760	4,300
La Harpe	528	2,808,044	800
Lakin	2,180	16,824,000	4,725
Larned	3,353	38,845,953	11,800
Lincoln Center	1,153	10,889,584	3,918
Lindsborg	3,776	28,899,102	9,300
Lucas	337	6,242,062	1,909
Mankato	848	7,466,341	2,500
Meade	1,505	14,025,846	4,963
Minneapolis	1,946	17,810,316	5,625
Montezuma	975	10,723,100	3,043
Moran	514	4,343,652	1,200
Morrill	225	1,080,238	367
Moundridge	1,974	33,654,200	7,200
Neodesha	2,142	38,234,560	10,900
Norton	2,652	24,300,866	7,274
Oberlin	1,850	13,349,367	5,007
Osage City	2,785	31,875,012	8,000
Osawatomie	4,883	30,614,267	8,500
Osborne	1,291	13,922,836	4,314
Ottawa	12,653	155,318,681	36,400
Pomona	850	7,530,092	2,100
Pratt	6,703	80,844,003	23,400
Prescott	260	1,082,022	400
Robinson	222	1,077,563	324
Russell	4,413	120,634,960	24,793
Sabetha	2,519	44,416,744	11,250
Seneca	2,170	35,147,329	3,818
Sharon Springs	764	7,395,070	2,314
St. Francis	1,263	10,706,409	3,716
St. John	1,200	13,594,404	3,374
Stafford	964	8,157,089	2,690
Sterling	2,209	24,676,393	6,916
Stockton	1,525	12,649,000	4,372
Troy	1,010	6,577,142	2,075
Wamego	4,860	49,307,042	13,000
Washington	1,033	10,551,691	3,520
Wathena	1,242	8,343,654	1,017
Wellington	7,715	94,374,634	25,855
Winfield	11,676	272,386,261	63,600

Totals	448,502	6,212,198,570	1,348,053
---------------	----------------	----------------------	------------------

2022 KMEA BOARD OF DIRECTORS

Alma

1. Michael Slobodnik
2. Trent Viergever
- A. Sherry Smith

Altamont

1. LeaAnn Myers
2. Brad Myers
- A. Louis Joe Carson

Anthony

1. Larry Berry
2. Cyndra Kastens
- A.

Arcadia

- 1.
- 2.
- A.

Arma

1. Rob Lessen
2. Howard Camp
- A. Travis Wood

Ashland

1. Richard Foster
2. Doug Roberts
- A. Wally Long

Augusta

1. Jim Sutton
2. Tim Johnson
- A. Josh Shaw

Baldwin City

1. Julie Costantinescu
2. Glenn Rodden
- A. Jeff Winkler

Belleville

1. Adam Anderson
2. Russ Piroutek
- A. Brian Phillips

Beloit

1. Jason Rabe
2. Manny Milbers
- A. Steven Krier

Blue Mound

1. Max Krull
2. Donnie Rhynerson
- A. Byron Coats

Bronson

1. John Stokes
- 2.
- A.

Burlingame

1. Leslie Holman
2. Gerald Britschge
- A. Patty Atchison

Burlington

1. Alan Schneider
2. R. Standley Luke
- A.

Cawker City

1. Barbara Wise
2. Drew Duskie
- A.

Centralia

1. Ryan Vernon
2. Ryan Allen
- A. Dustin Walters

Chanute

1. Brandon Westerman
2. Todd Newman
- A. Ryan Follmer

Chapman

1. Wesley Phillips
2. Bill Flanery
- A. Tim Jury

Chetopa

1. Geraldine Castle
2. Debra Darnell
- A. Toni Crumrine

Cimarron

1. Jeff Acton
2. Shannon Hoskinson
- A. Mike Coast

Coffeyville

1. Mark Hall
2. Michael Shook
- A. Tony Lawson

Colby

1. Patt Mallory
- 2.
- A. Ron Alexander

Dighton

1. Craig Collins
2. Craig Doris
- A. Curtis Hanna

Elwood

- 1.
- 2.
- A.

Enterprise

1. Damon Greep
2. Trent Jordan
- A. Mike Humes

Erie

1. Darrell Bauer
2. Trenton Moore
- A.

Eudora

1. Branden Boyd
2. Barack Matite
- A. Mark Landry

Fredonia

1. Derek Wood
2. Alex Mitoska
- A. Bill Jones

Garden City

1. Mike Muirhead
2. Kent Pottorf
- A.

Gardner

1. Matt Ponzer
2. Gonzalo Garcia
- A. Bruce Baldwin

Garnett

1. Travis Wilson
2. Joe Owens
- A. Troy Hart

Girard

1. Cliff Scales
2. Jess Murphy
- A. Johanna O'Brien

Glasco

1. Clark Coco
2. Dan Darnall
- A. Doug Berndt

Glen Elder

1. Jerri Senger
2. Eldon Behymer
- A. Sheila Paxson

Goodland

1. Dustin Bedore
2. Chris Douglas
- A. Lukas Wolak

Herington

1. David Kahle
2. Branden Dross
- A. Joshua Boyd

Hill City

1. Scott Roberts
2. Dennis Mersch
- A. Greg Deines

Hoisington

1. Jonathan Mitchell
2. Cecelia Conrad
- A. Ray Byers

Holton

1. Kerwin McKee
2. Ira Harrison
- A.

Horton

1. Carmela Boller
2. Bryan Stirton
- A. Rex West

Hugoton

1. Logan Frederick
2. Richard Barnes
- A. Thomas Frederick

Iola

1. Mike Phillips
2. Matt Rehder
- A. Corey Schinstock

Jetmore

1. Michael Ort
2. Derek Olson
- A. Brian Beil

Johnson City

1. Tyce McMillan
2. Seth Nelson
- A. Bret Kendrick

Kansas City BPU

1. Dong Quach
- 2.
- A.

Kiowa

1. Sam Demel
2. John Duval
- A. Bill Watson

La Crosse

1. Duane Moeder
2. Toby Bright
- A.

La Harpe

1. Sharlyn Thompson
2. Ron Knavel
- A.

Lakin

1. Robbie McCombs
2. Kevin Fearn
- A. Amanda Riedl

Larned

1. Bradley Eilts
2. Ralph Streit
- A. Harry Zielke

Lincoln Center

1. Elijah Keever
2. Jeff Ahring
- A. Melodee Larsen

Lindsborg

1. Kristi Northcutt
2. Lucas Neece
- A. Clark Schultz

Lucas

1. Tarry Dougherty
- 2.
- A. Travis Naegele

Mankato

1. Marvin McCormick
2. Hunter Kohler
- A.

Meade

1. Brian Kroth
2. J.D. Hegwood
- A. Dean Cordes

Minneapolis

1. Barry Hodges
- 2.
- A.

Montezuma

1. Warren Wright
2. Chris Olsen
- A. Matthew Axtell

Moran

1. William Bigelow
2. Kristofor Smith
- A. Corliss Lynes

Morrill

1. Linda Wymer
2. Griffen Huning
- A.

Moundridge

1. Kevin Schmidt
2. Jeremy Moore
- A. Murray McGee

Neodesha

1. Brandon Hearn
2. Ed Truelove
- A. Stephanie Fyfe

Norton

1. James Moreau
2. Jerry Jones
- A. Alex Haffner

Oberlin

1. Halley Roberson
2. Garret McDougal
- A. David Sporn

Osage City

1. Rod Willis
2. Dale Schwieger
- A.

Osawatomie

1. Terry Upshaw
2. Bret Glendening
- A. Nick Hampson

Osborne

1. Michael LeiVan
2. Tony Woolley
- A. Eric Standley

Ottawa

1. Sara Caylor
2. Dennis Tharp
- A. Jeff Oleson

Pomona

1. Marie Seneca
2. Charlie Beuttel
- A.

Pratt

1. Bruce Pinkall
2. Jamie Huber
- A. Evan Hance

Prescott

1. Rolland Grigsby
2. Kevin Wood
- A. Kathy Wood

Robinson

1. Mark Lieneman
2. Steve Brown
- A. Arthur Malott

Russell

1. Jon Quinday
2. Duane Banks
- A. Jim Cross

Sabetha

1. Douglas Allen
2. Billy Shroyer
- A. Matthew Brucken

St. Francis

1. Scott Schultz
2. Dan Blair
- A. Kale Dankenbring

St. John

1. Jeff Williamson
2. Marshal Sanders
- A. Kyle Bunker

Seneca

1. Jim Mitchell
2. Tami Haverkamp
- A. Bruce Deters

Sharon Springs

1. Dennis Sharp
2. Jay Sharp
- A. Patrick Gibbs

Stafford

- 1.
- 2.
- A. Andy Holmes

Sterling

1. John Wagerle
2. Craig Crossette
- A. David Fankhauser

Stockton

1. Jeff Scott
2. Courtney Flower
- A. Robert Becker

Troy

1. William Ruhnke
2. Tim Hanlan
- A. Sarah Boeh-Cerra

Wamego

1. Stacie Eichem
2. Casey Frisbie
- A.

Wathena

- 1.
- 2.
- A.

Washington

1. Richard Applegarth
2. David L'Ecuyer
- A. Carl Chalfant

Wellington

1. Jason Newberry
2. Roger Estes
- A.

Winfield

1. Gus Collins
2. Taggart Wall
- A. Gregory Thompson





Gary L. Bantz
Vice President
Utility Superintendent, Mulvane



Richard L. Calk
Secretary/Treasurer
Electric Utility Director, Winfield



Barry E. Giffin
Cashier, Larned



Jack Davis
Director of Utility Service, Ottawa

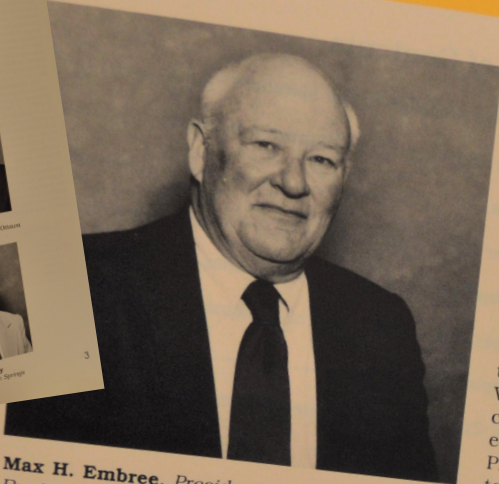


Arlyn Bradford
Electric Superintendent, Pratt



Charles E. McHenry
Commissioner, Storm Springs

President's Message to the Members



Max H. Embree, President
Businessman/Rancher, Colby

began the planning process by holding strategic planning workshops in March 1992. Elected officials and administrators from the member cities met in Emporia and Hays to exchange ideas on which of their electric utility needs might be best addressed through joint action. When the workshops concluded, we formed the Strategic Planning Committee to translate the recommendations into

approve expenditures, review finances, receive activity reports from the general manager and discuss other Agency business. In May and again in November, the full Board meets to approve the budget, approve any financings, elect officers and committee members, and vote on other Agency issues. Board members are kept informed of Agency activities through executive summaries, meeting agendas and reports mailed out monthly. All Board members and other interested city officials or citizens are encouraged to attend the Executive Committee and Board meetings.

KMEA is a mere compact, existing by the will of its members. Its strength and influence arise when its members transfer a portion of their own powers into joint action activities. Only when the cities envision a common good to be gained through cooperation do they grant powers to KMEA. As circumstances may dictate, members may need to set aside provincial circumstances of the moment to actively pursue the promise of a greater future benefit made possible through a viable joint action agency.

As the Strategic Planning process and the gas agency management agreement illustrate, KMEA ultimately reflects the visions of its members, the value they place on public power, and their willingness to face the competitive and regulatory challenges of the rapidly evolving electric utility industry. How effective we will be depends largely on each member's participation and commitment.

Max H. Embree
Max H. Embree
President

KMEA's strength as a joint action agency derives from the collective involvement and participation of its member cities. The Agency has only those powers we, as its members, elect to give it. As such, we have both the opportunity and the responsibility to see that our Agency can best serve our common interests. We created this opportunity when we established KMEA. Our responsibility lies in staying actively involved with KMEA to ensure that our opportunities are fully exploited.

Active member participation in directing the Agency's activities produces results. This is exemplified in the strategic planning process undertaken last year, as well as in the decision to provide management services to the recently formed gas agency.

To adjust KMEA's focus on future needs, steps were taken to identify electric utility issues that could be successfully addressed by joint action. To learn what issues most concerned its members, KMEA

a report. The Strategic Planning Report presented to the Board at its November meeting listed activities KMEA could undertake in the areas of power supply, competition, regulatory compliance, utility operations and member relations.

The benefits of active involvement by cities working on a common goal was also shown when several cities decided to jointly purchase their natural gas supplies. The Kansas Municipal Gas Agency was formed in 1990, and in March 1992 fifteen KMGAs members began purchasing gas through their agency. Seeing the opportunity to deploy our existing administrative personnel and offices on a new project, KMEA entered into an agreement to manage the new gas agency. KMEA members will benefit from the arrangement by sharing the revenues generated from the management contract.

Our members can participate in Agency business in several ways. Directors from member cities may be an officer or a member of the Executive Committee, or simply attend Agency meetings. Every month, the Executive Committee meets to

A MESSAGE FROM KMGGA'S PRESIDENT AND GENERAL MANAGER

GUS COLLINS AND PAUL MAHLBERG



As we reflect on the year 2022, the one thing that comes to mind is that our members are the core of everything we do. Our highest priority is providing reliable, cost-effective gas supply and energy services to help our member communities thrive. This has been our mission for the last thirty-one years and will continue to be our focus for the future.

2022 was a year of building on this mission despite being a year of continued challenges including the globalization of the industry, accelerated by the war in Ukraine, inflationary pressures that the U.S. hasn't experienced for decades, and expansion of liquefied natural gas exports, to name a few. These new complexities were the driver for sustained high natural gas prices throughout the United States.

KMGGA faced these challenges by remaining laser-focused on developing solutions to ensure a stable, low-cost, and reliable gas supply for the members. We listened to the membership in one-on-one discussions, through regional meetings, following the leadership of the KMGGA Executive Committee - working as a group through joint action to develop new strategies to overcome changes in the industry. More than ever, we believe we remain stronger together.

As we move into 2023, we will continue to explore new opportunities and solutions as we navigate through industry changes. One thing is certain, we will remain committed to our members, your customers, and the communities you serve.

Thank you for your continued support and for allowing us to serve you in 2022!

A handwritten signature in black ink, reading "Gus Collins".

Gus Collins
KMGGA President

A handwritten signature in black ink, reading "Paul Mahlberg".

Paul Mahlberg
KMGGA General Manager

RON HUXMAN DISTINGUISHED SERVICE AWARD JESSICA PRESLER

Jessica Presler, City Clerk of the City of Jamestown, was selected by past winners to receive the 2022 Ron Huxman Award. The award was established in 2016 in honor of Ron. He played a leading role in the day-to-day activities of the agency, as well as serving as president, executive committee member and joint board member. The award honors his contributions to KMGA and is presented to individuals who have demonstrated exceptional leadership and devoted service to both KMGA and to the municipal natural gas industry.



MIKE GILLILAND HONOR AWARD EARL FINDLEY

Earl Finley, Assistant Director of Public Works of the City of Kechi, was selected as the 2022 recipient of the Mike Gilliland Honor Award. The award was established in 2016 to recognize Mike's efforts, which include playing a leading role in the agency and serving multiple terms as president, vice president, and executive committee member. The award honors his contributions to KMGA and is to recognize an employee of a KMGA member city who has, over a period of years, demonstrated similar outstanding performance and made significant contributions to their municipal utility.

KMGA BOARD OF DIRECTORS MEETINGS

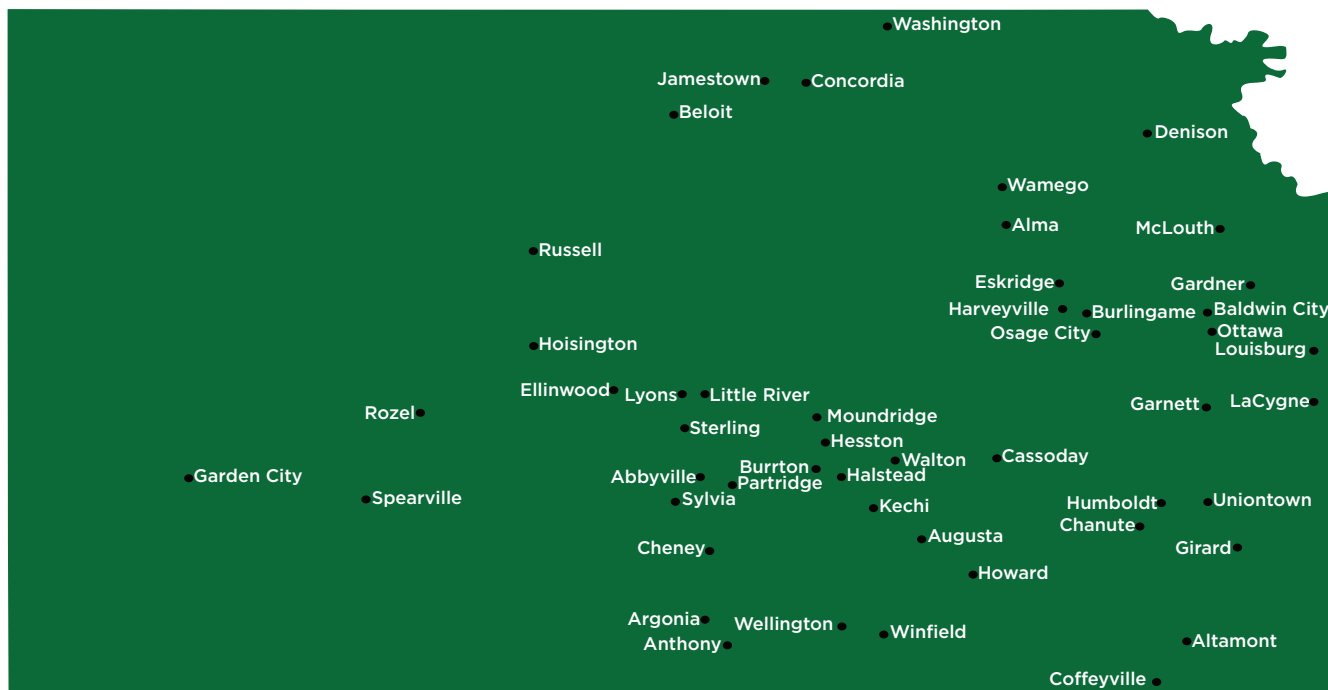
The KMGA Board of Directors met twice in 2022. During the April 27th meeting the board approved the addition of the cities of Sylvia to the membership and reviewed the preliminary 2023 budget.

The board met again on September 29th. They took action to approve the 2023 budget, and elected officers, at-large executive committee members, and joint board representatives. Gus Collins, from the City of Winfield, was re-elected KMGA president.

THE CITY OF SYLVIA BECOMES THE NEWEST KMGA MEMBER

In 2022 the KMGA Board of Directors approved the addition of the City of Sylvia to the membership, bringing the total number of full members to 47.





Alma

1. Michael Slobodnik
2. Trent Viergever

Altamont

1. LeaAnn Myers
2. Brad Myers

Anthony

1. Larry Berry
2. Cyndra Kastens

Argonia

1. Rick Dolley
2. Tara Pierce

Augusta

1. Tim Johnson
2. Jim Sutton

Baldwin City

1. Glenn Rodden
2. Rob Culley

Beloit

1. Manny Milbers
2. Steven Krier

Burlingame

1. Leslie Holman
2. Drake Whalen

Burrton

1. Jon Roberts
2. Kim Ryan

Cassoday

1. Lequita Joy Nelson
- 2.

Cheney

1. Gerald Peitz
2. Danielle Young

Coffeyville

1. Mike Shook
2. Mark Hall

Concordia

- 1.
2. Gary Strait

Ellinwood

1. Chris Komarek
2. Jon Perron

Eskridge

1. Mike Bohn
2. Stephanie Graham

Garden City

1. Kent Pottorf
2. Mike Muirhead

Gardner

1. Gonzalo Garcia
2. Matt Ponzer

Garnett

1. James DePriest
2. Travis Wilson

Girard

1. Cliff Scales
2. Jess Murphy

Halstead

1. Ethan Reimer
2. Patrick Adams

Harveyville

1. Roy Rickel
2. Gary Dixon

Hesston

1. Gary Emry
2. Scott Robertson

Hoisington

1. Jonathan Mitchell
2. Darren Delzeit

Howard

1. Joanna Hunter
2. Ernest Tousley

Humboldt

1. Jeremy Bulk
2. Chaz Sanchez

Jamestown

1. Jacob Thoman
2. Jessica Presler

Kechi

1. Theresa Morlan
2. Thomas Bevan

La Cygne

1. Jodi Wade
2. Daniel Nasalroad

Little River

1. Don Teeters
- 2.

Louisburg

1. Nathan Law
2. Richard Mikesic

Lyons

1. Chad Buckley
2. Rob Wallace

McLouth

1. Kim Everley
2. John DeLaet

Moundridge

1. Murray McGee
2. Jeremy Moore

Osage City

1. Dale Schwieger
2. Rod Willis

Ottawa

1. Dennis Tharp
2. Jeff Oleson

Partridge

1. Tyler Eash
2. Ray Davis

Rozel

1. Faye Grandy
2. Terry Ryan

Russell

1. Dave Sturgeon
2. Kayla Schneider

Spearville

1. Jeremy Luthi
2. Tammy Konrade

Sterling

1. John Wagerle
2. Craig Crossette

Sylvia

1. Carlyn Conrad
2. Debra Mitzner

Uniontown

1. Sally Johnson
2. Bobby Rich

Walton

- 1.
2. Stephanie Ashby

Wamego

1. Staci Eichem
2. Casey Frisbie

Washington

1. Richard Applegarth
2. Carl Chalfant

Wellington

1. Roger Estes
2. Ryan Hain

Winfield

1. Gus Collins
2. Taggart Wall

AFFILIATE MEMBERS

Abbyville
Chanute
Denison

1. Director
2. Alternate

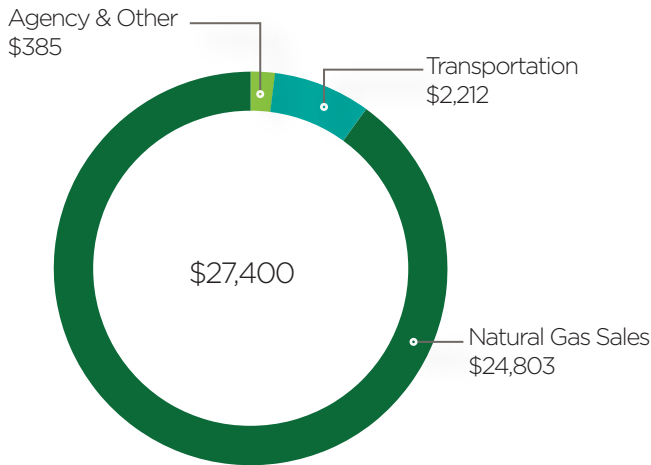
KMGA MEMBER CITIES SUMMARY

City	Population	MMBtu Sold
Abbyville	200	3,521
Altamont	1,080	42,259
Anthony	2,100	923
Argonia	500	18,057
Augusta	9,368	22,300
Baldwin City	4,752	3,675
Beloit	3,452	2,214
Burlingame	971	44,053
Burrton	856	23,013
Cassoday	120	7,181
Cheney	2,181	85,612
Coffeyville	8,900	877,626
Concordia	5,005	1,867
Denison	145	9,623
Ellinwood	1,969	352
Eskridge	501	54,113
Garden City	34,437	57,628
Gardner	23,942	1,388
Garnett	3,234	157,467
Girard	2,707	2,888
Halstead	2,277	216,060
Hesston	3,800	348,375
Hoisington	2,657	162
Howard	600	28,186
Humboldt	1,953	91,349
Jamestown	310	13,501
Kechi	2,016	59,899

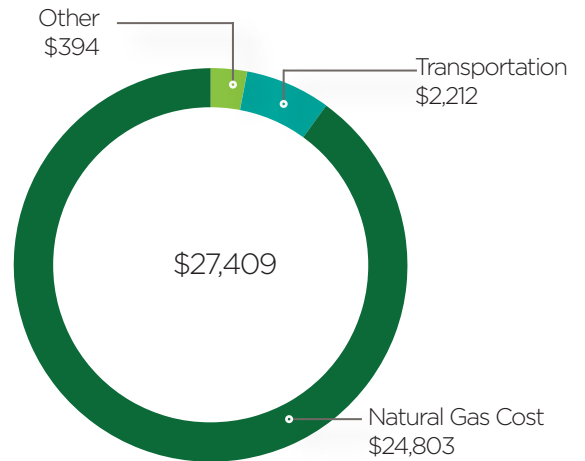
City	Population	MMBtu Sold
La Cygne	1,086	62,438
Little River	536	11,151
Louisburg	4,499	137,428
Lyons	3,564	160,219
Manhattan	55,045	17,148
McLouth	859	30,248
Moundridge	1,974	101,026
Osage City	2,785	118,045
Ottawa	12,653	15,724
Partridge	274	6,558
Rozel	104	9,363
Russell	4,413	17,224
Spearville	850	36,602
Sterling	2,209	217
Sylvia	210	9,164
Uniontown	293	8,719
Walton	231	11,202
Wamego	4,860	1,931
Washington	1,033	800
Wellington	7,715	126,009
Winfield	11,676	638,779
Totals	236,902	3,024,154

KMGA FINANCIAL HIGHLIGHTS

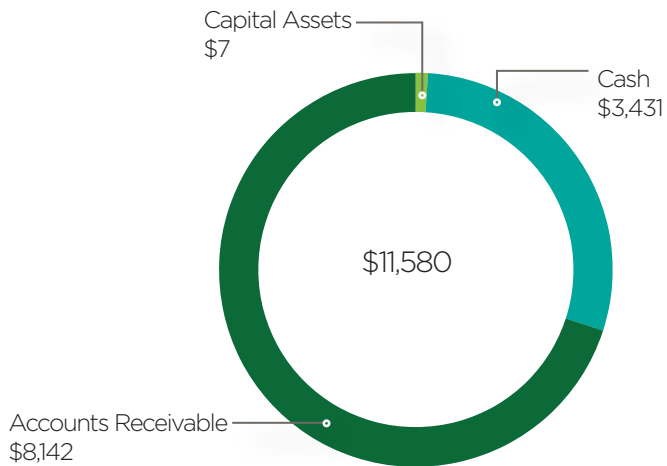
2022 REVENUES (IN THOUSANDS)



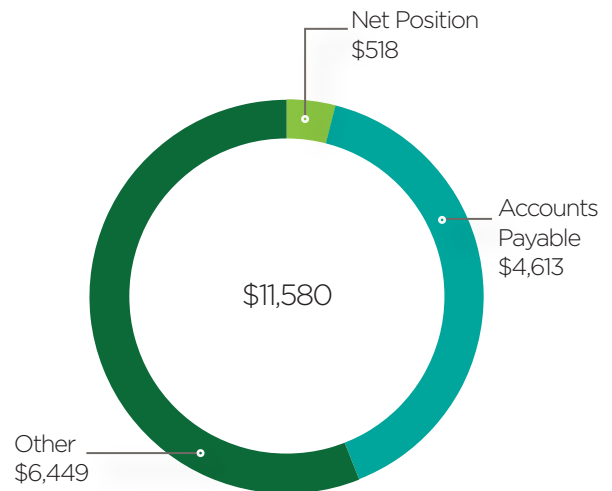
2022 EXPENSES (IN THOUSANDS)



2022 ASSETS (IN THOUSANDS)



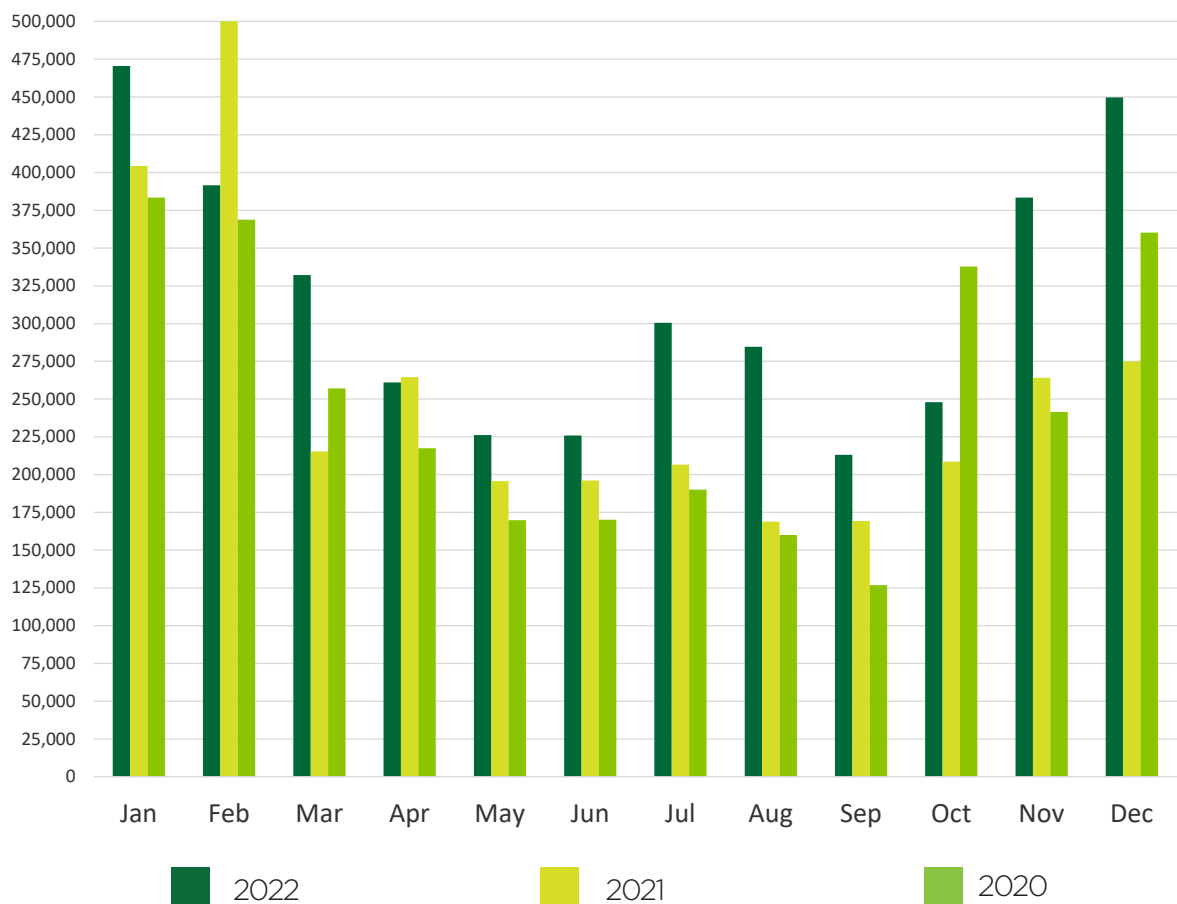
2022 LIABILITIES & NET POSITION (IN THOUSANDS)



The completed audited financial report for 2022 can be found at www.kmea.com.

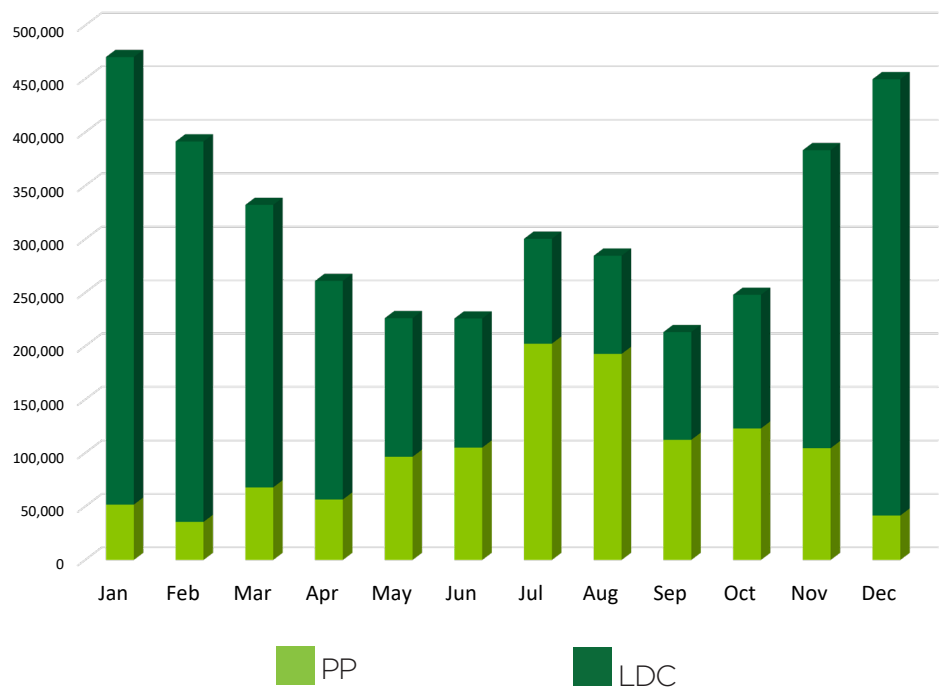
NATURAL GAS SUPPLY PURCHASE

In 2022 KMGGA members purchased 3.78 million MMBtu of natural gas supply, an increase of 23% over 2021.



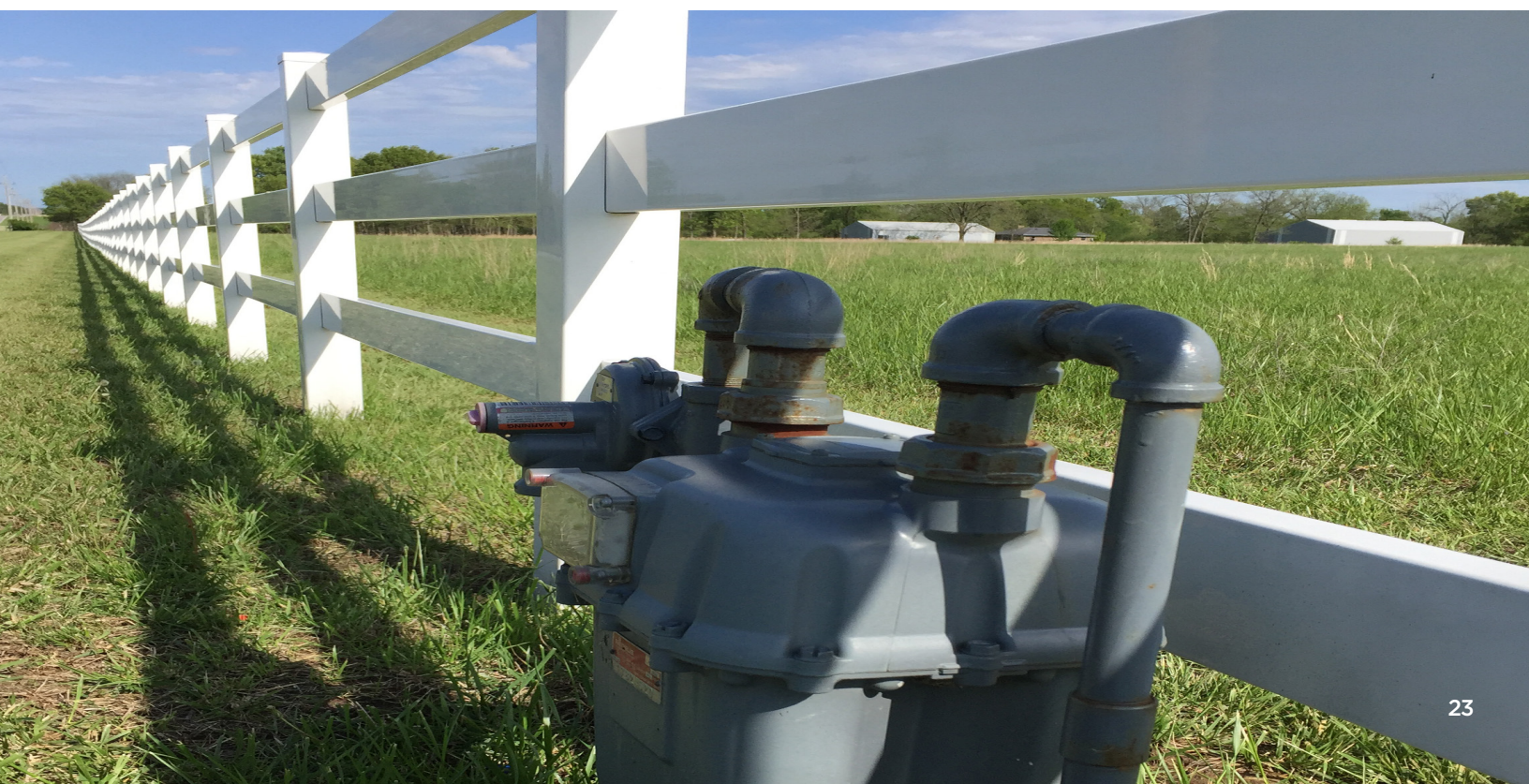
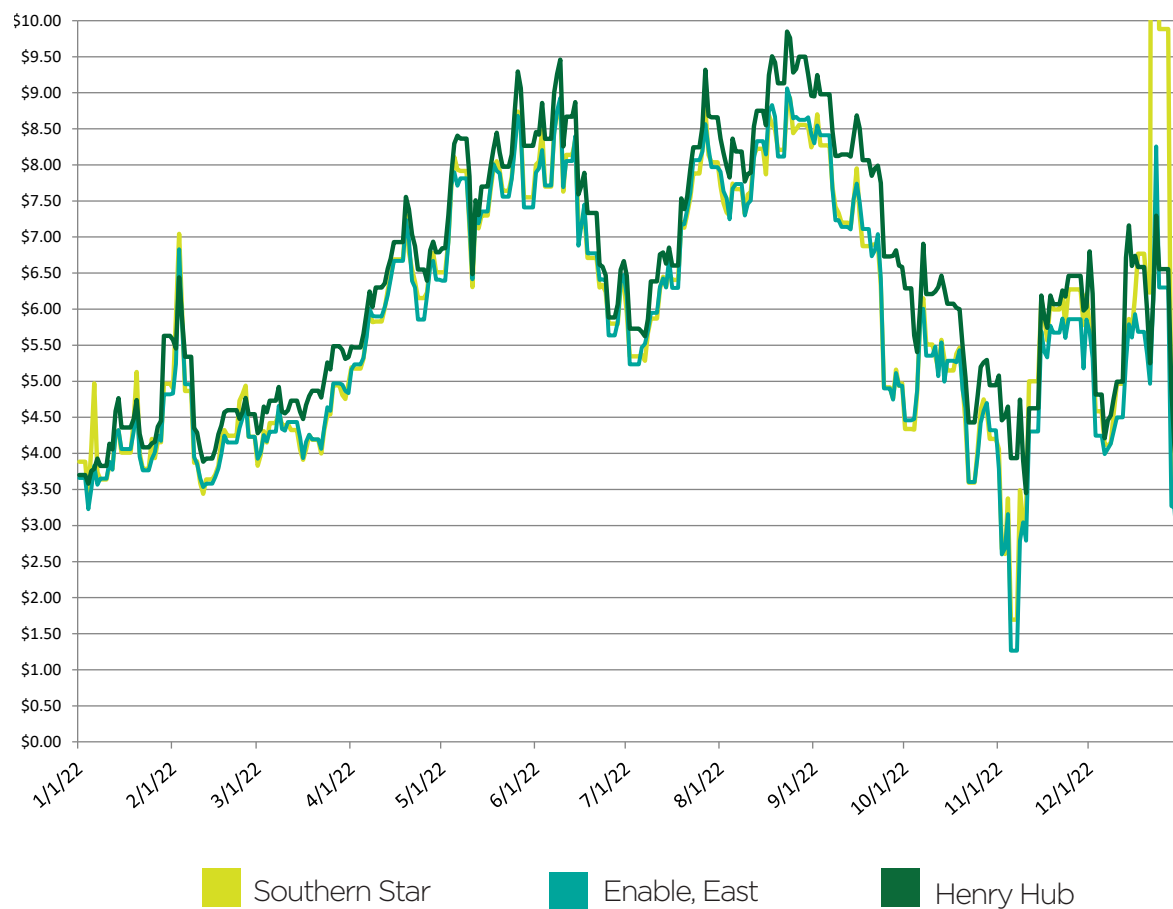
City owned distribution systems (LDC) accounted for 68% of annual gas supply volume. Gas supply for gas-fired electric generation (power plants) more than doubled over the prior year, making up 32% of the remaining overall 2022 load.

2022 GAS SUPPLY VOLUMES BY MEMBER TYPE



NATURAL GAS PRICES

Gas prices were volatile through much of 2022. Summer prices were elevated due to increased gas-fired electric generation. The lowest posted daily index price was \$1.265 per MMBtu on November 5th. On December 22nd, the highest posted daily index price for 2022 was recorded at \$29.725 per MMBtu. KMGa's 2022 average price across all member types was \$6.53 per MMBtu.



KMGA EXECUTIVE COMMITTEE



KMEA EXECUTIVE COMMITTEE



JOINT BOARD FOR ADMINISTRATION



As of 09/30/2022

2022 BUSINESS ASSOCIATES



KMEA STAFF- OVERLAND PARK



KENT BALKENBUSCH System Operator	GERRY BIEKER Managing Director, Electric Operations	LAURIE BROCK Director, Finance & Accounting	NEAL DANEY Director, Projects & Asset Management	LISA FERGUSON Administrative Assistant	PAUL MAHLBERG General Manager	TYSON MCGREER Manager, Member Services	MIKE MEYER Director, Finance & Accounting
--	--	--	---	---	---	---	--



KATIA MITCHELL Office Manager	RAFAEL MORFIN System Operator	TERRI PEMBERTON General Counsel	DIXIE RIEDEL Director of Natural Gas	NEIL ROWLAND Director, Transmission & Security	TOM SAITTA Director, Electric Operations	JAMES SANDERS System Operator	JOHN SECK Director, Resource Planning & Development
---	---	---	---	---	---	---	--

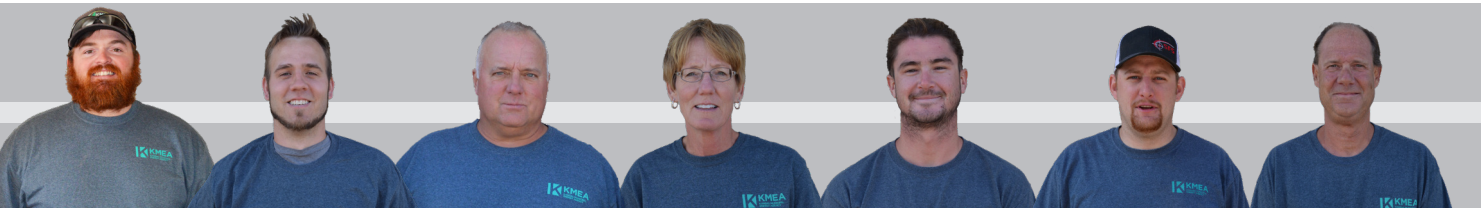


JONI SHADONIX Administrative Assistant	DJ SMITH System Operator	JOHN WEBER Manager, Finance & Accounting	CHAD WHITE System Operator	DARREN PRINCE Manager, Regulatory & Rates	WILLIE WILKERSON System Operator
---	------------------------------------	---	--------------------------------------	--	--

KMEA STAFF- SALINA



CHRIS CROUCHER Line Foreman	KRIMZYN CLARK Apprentice Lineman	HUNTER DAUTEL Field Technician 1	JEFF LEGER Manager, Field Services	CHRIS MCKEE Shop Foreman	JASON MULLINIX Journeyman Lineman	HENRY MORROW Journeyman Lineman
---------------------------------------	--	--	--	------------------------------------	---	---



STEVEN PORTER Journeyman Lineman Foreman	JOSH SCHMADERER Manager of Engineering	MIKE SCHMADERER Director, Engineering & Field Services	SHARON SCHMADERER Office Technician	ROBERT SIMPSON Field Technician 1	CHARLES SMITH Field Service Technician	DONALD WALKER Field Services Foreman
---	---	---	---	---	---	---



DAN WHITE Director, Engineering Field Services



WWW.KMEA.COM